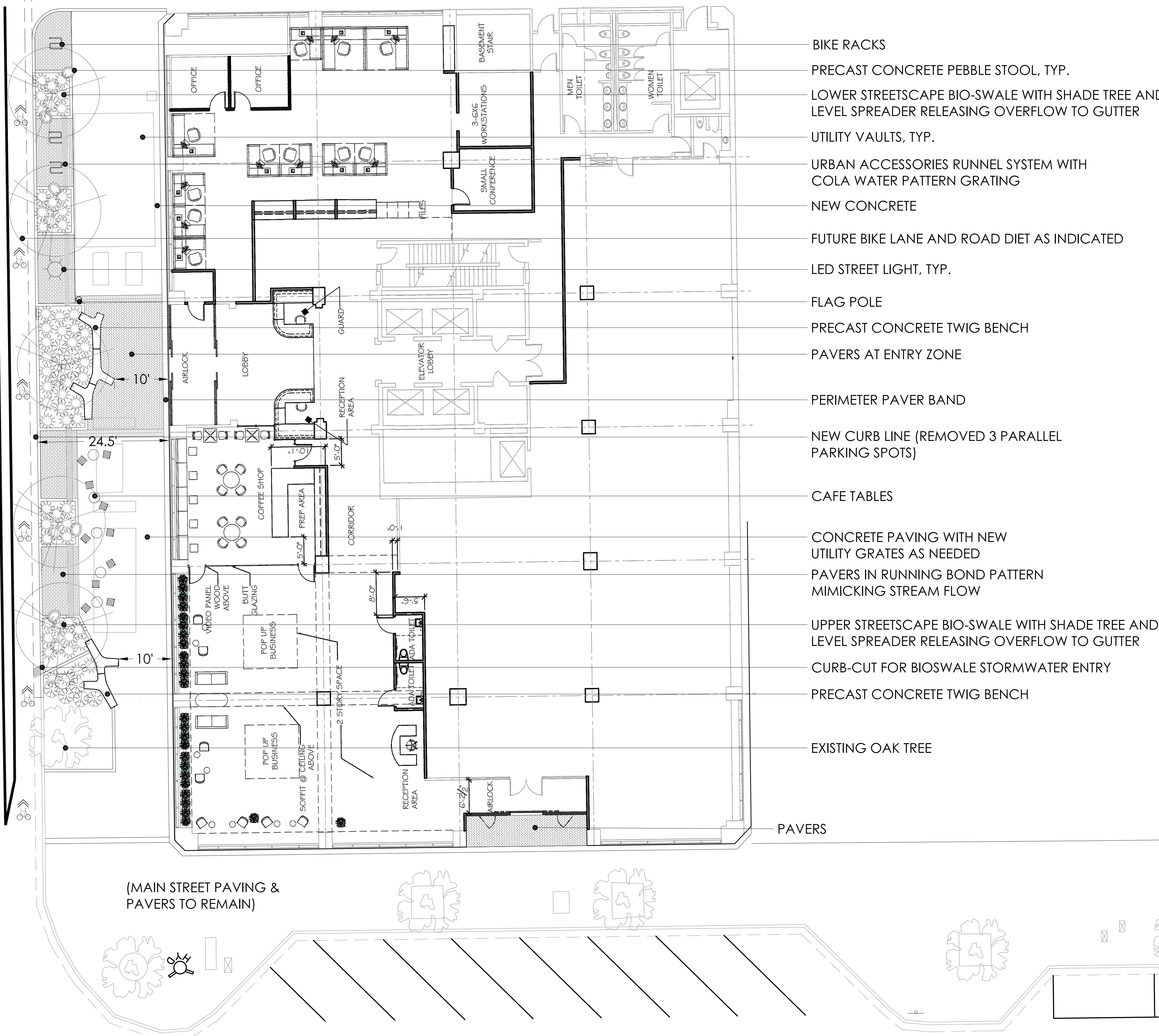


DESIGN CONCEPT:

CONCEPT WEAVES IN A RIVER THEME TO CAPTURE THE THREE RIVERS AND THE CITY OF COLUMBIA BRANDING. SITE FURNISHINGS USE NATURAL ELEMENTS FOUND ALONG A STREAM (TWIG SEATING AND PEBBLE STOOLS) IN A CLEAN AND SIMPLE MATERIAL TO RESPECT ARCHITECTURE. PAVERS WOULD DEFINE THE ENTRY AND RUN ALONG THE STREET EDGE IN THE LANDSCAPE ZONE CONNECTING EACH LANDSCAPE BED WITH A RUNNING BOND PATTERN THAT MIMICS THE FLOW OF WATER. THE LANDSCAPE BEDS WOULD BE FUNCTIONAL BIO-SWALES THAT CAPTURE WATER FROM THE STREET GUTTER SYSTEM AND RUN-OFF. WATER COLLECTED AT THE FIRST UPPER BIO-SWALE PLANTER WOULD FILTER WATER AND TRANSPORT OVERFLOW IN A RUNNEL SYSTEM THAT FOLLOWS A TRAIL OF BIO-SWALES ALONG THE STREETScape. THE FINAL BIO-SWALE WOULD RELEASE OVERFLOW BACK INTO GUTTER WITH A LEVEL SPREADER. THE BIO-SWALE FEATURES WOULD SLOW DOWN RUN-OFF AND REMOVE POLLUTANTS FROM STORMWATER, OFFERING AN EDUCATIONAL COMPONENT FOR STORMWATER TREATMENT. CAFE SEATING WOULD PROVIDE FUNCTIONAL SEATING FOR THE COFFEE SHOP AND COMPLIMENT INTERIOR SEATING. BIKE RACKS WOULD BE ADDED TO HELP ENCOURAGE BIKING TO WORK AND TO SUPPORT FUTURE BIKE LANE. A FLAG POLE WOULD ANCHOR THE STREETScape NEAR THE WASHINGTON STREET ENTRY. TO CREATE THIS SPACE, EXISTING PARALLEL PARKING WOULD BE REMOVED ALONG WASHINGTON STREET AND TRANSFORMED INTO A PEDESTRIAN ZONE AS INDICATED.

WASHINGTON STREET



- BIKE RACKS
- PRECAST CONCRETE PEBBLE STOOL, TYP.
- LOWER STREETScape BIO-SWALE WITH SHADE TREE AND LEVEL SPREADER RELEASING OVERFLOW TO GUTTER
- UTILITY VAULTS, TYP.
- URBAN ACCESSORIES RUNNEL SYSTEM WITH COLA WATER PATTERN GRATING
- NEW CONCRETE
- FUTURE BIKE LANE AND ROAD DIET AS INDICATED
- LED STREET LIGHT, TYP.
- FLAG POLE
- PRECAST CONCRETE TWIG BENCH
- PAVERS AT ENTRY ZONE
- PERIMETER PAVER BAND
- NEW CURB LINE (REMOVED 3 PARALLEL PARKING SPOTS)
- CAFE TABLES
- CONCRETE PAVING WITH NEW UTILITY GRATES AS NEEDED
- PAVERS IN RUNNING BOND PATTERN MIMICKING STREAM FLOW
- UPPER STREETScape BIO-SWALE WITH SHADE TREE AND LEVEL SPREADER RELEASING OVERFLOW TO GUTTER
- CURB-CUT FOR BIOSWALE STORMWATER ENTRY
- PRECAST CONCRETE TWIG BENCH
- EXISTING OAK TREE
- PAVERS

(MAIN STREET PAVING & PAVERS TO REMAIN)

MAIN STREET

FOR REVIEW ONLY
Site Plan



Parks & Recreation Department
1111 Recreation Drive
Columbia, SC 29203
803/545-3100



Sheet of _____
Drawn by: _____
Revision date: _____
Release date: 06.17.2025
Revision number: _____

