



CITY OF
Columbia

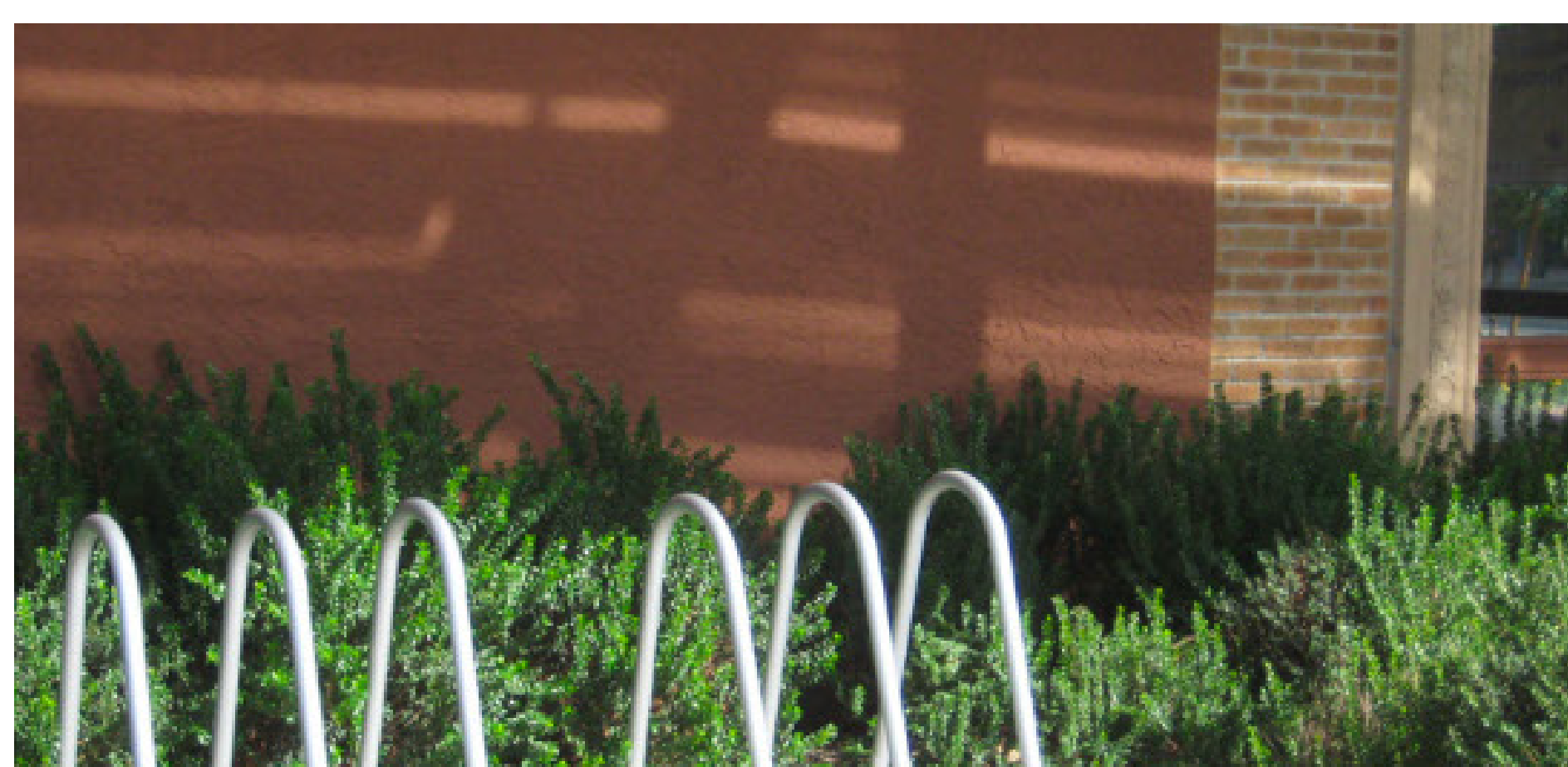
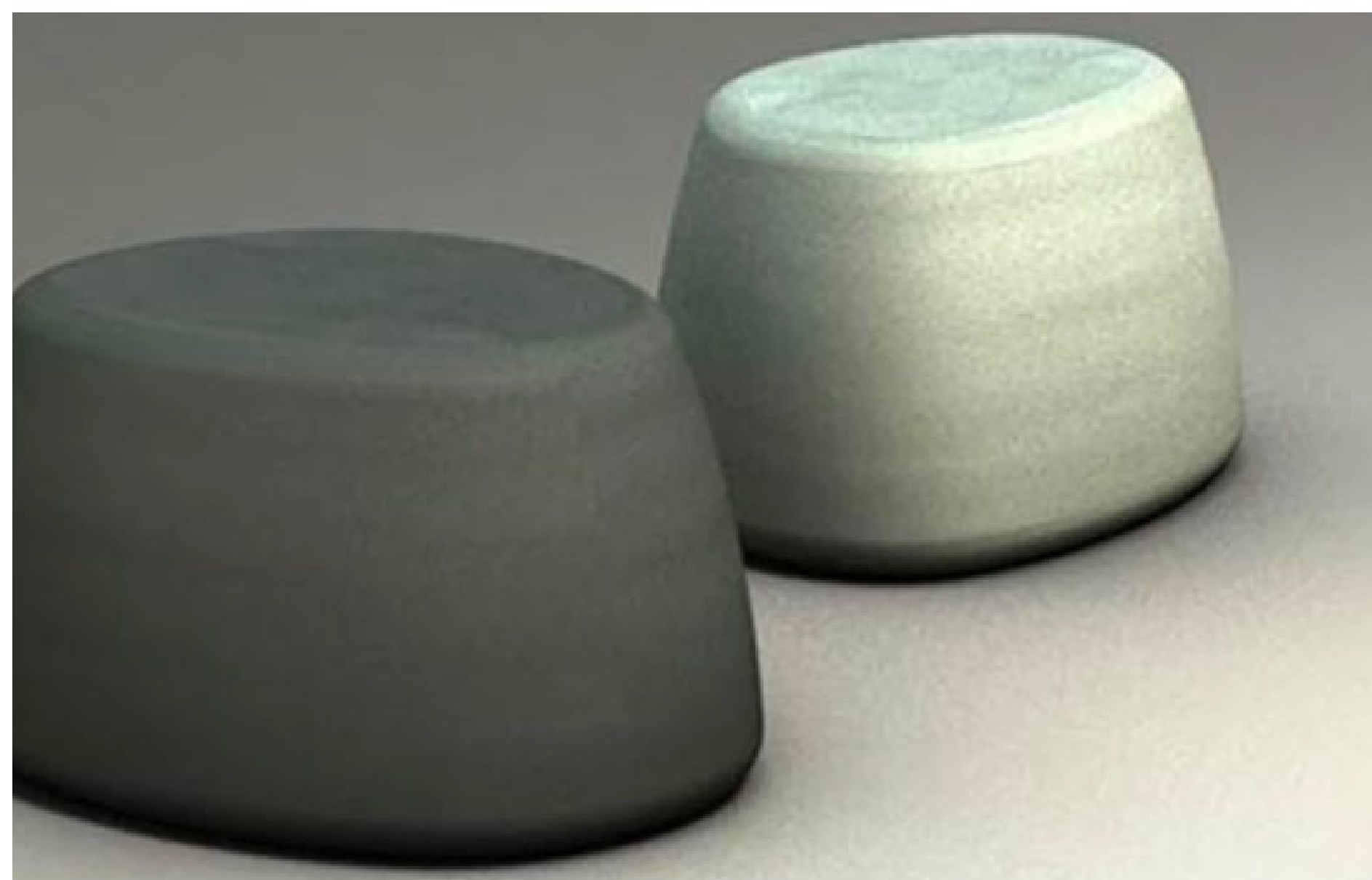
CITY OF
Columbia
MUNICIPAL
COMPLEX

1401 Main Street, Columbia, SC

SCAN FOR FULL PROJECT



CITY OF
Columbia



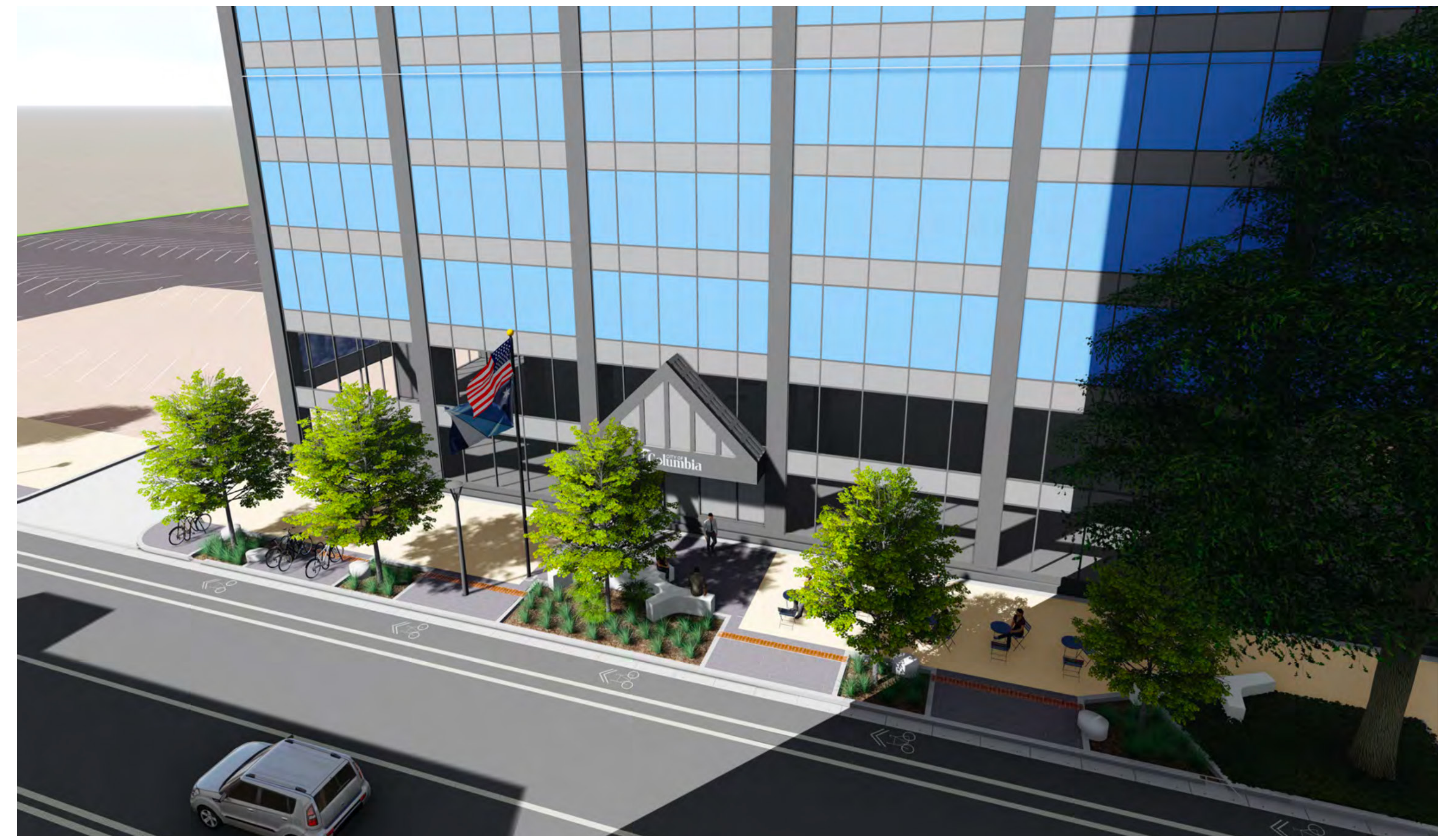

SHERER ARCHITECTS
 PALMETTO
 CHILLER


MIMMS
 CONTRACTING

MIDLANDS
ELECTRICAL







1401 Main Street, Columbia | Street Perspective of Main





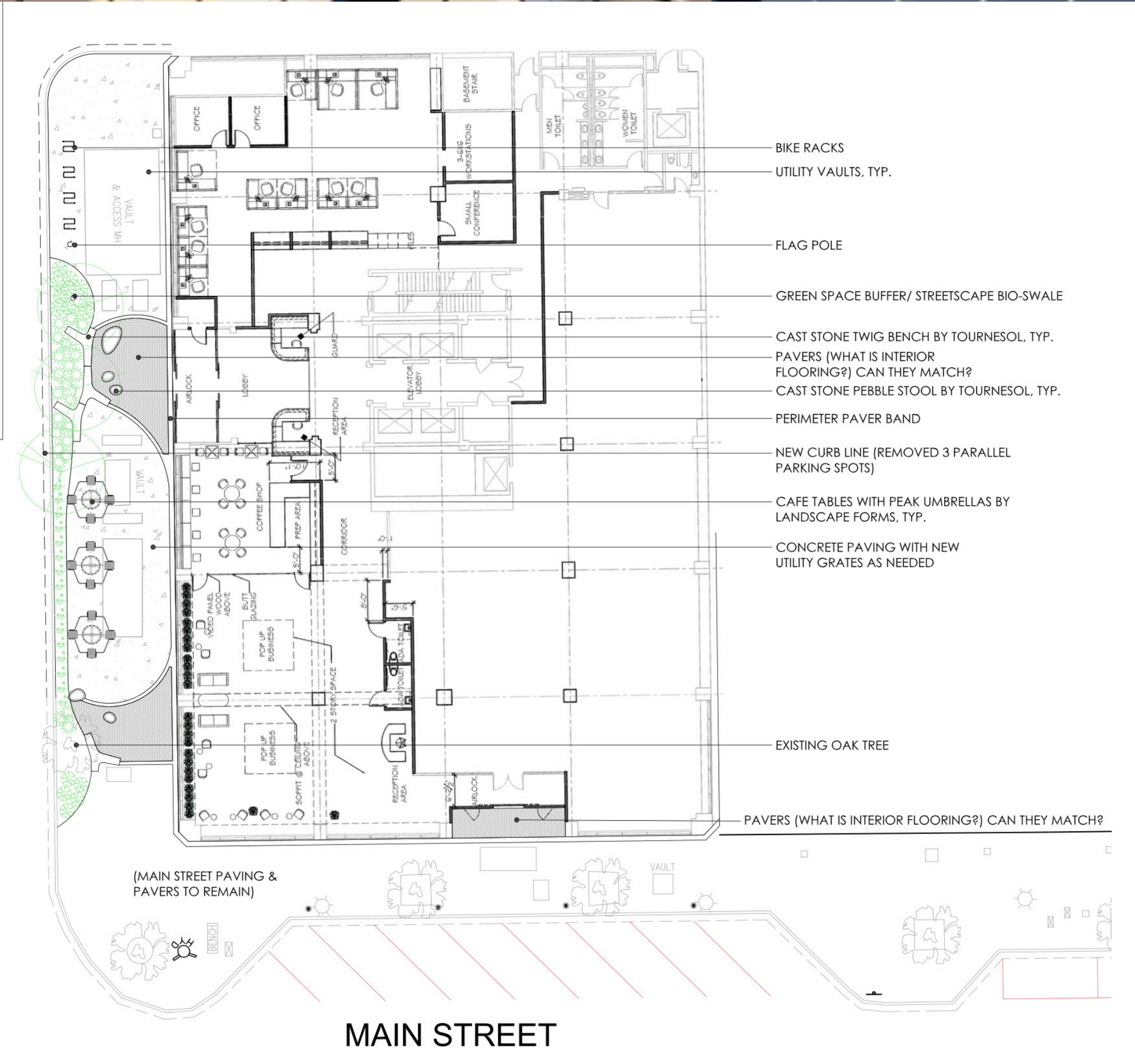
1401 Main Street, Columbia | Entrance + Pop Up Space





CONCEPT WEAVES IN A RIVER THEME TO CAPTURE THE THREE RIVERS AND THE CITY OF COLUMBIA BRANDING. SITE FURNISHINGS USE NATURAL ELEMENTS FOUND ALONG A STREAM (TWIG SEATING AND PEBBLE STOOLS) IN A CLEAN AND SIMPLE MATERIAL TO RESPECT ARCHITECTURE. PAVERS WOULD DEFINE THE ENTRY POINTS AND WIND THROUGH THE SPACE. IF POSSIBLE, PAVERS COULD MATCH OR COMPLEMENT THE INTERIOR FLOORING AT ENTRY LOCATIONS. SEATING WITH UMBRELLAS WOULD PROVIDE FUNCTIONAL SEATING FOR THE COFFEE SHOP. A PLANTED LANDSCAPE WOULD PROVIDE A BUFFER FROM WASHINGTON STREET WITH A MIX OF PLANTS AND SHADE TREES IN SELECT LOCATIONS. STREET POLLUTANTS FROM STORMWATER COULD BE CAPTURED WITH A BIO-SWALE IN THE LANDSCAPE ZONE. THIS ELEMENT WOULD NEED TO BE REVIEWED WITH ENGINEERING AND COULD BE AN EDUCATIONAL COMPONENT FOR THE STREETScape. BIKE RACKS WOULD BE ADDED TO HELP ENCOURAGE BIKING TO WORK. A FLAG POLE WITH THE AMERICAN, STATE AND CITY FLAGS WOULD ANCHOR THE STREETScape NEAR THE WASHINGTON STREET ENTRY. TO CREATE THIS SPACE, EXISTING PARALLEL PARKING WOULD BE REMOVED ALONG WASHINGTON STREET AND TRANSFORMED INTO A PEDESTRIAN ZONE AS INDICATED.

WASHINGTON STREET



MAIN STREET